



Prevention and management of COVID-19 among patients with diabetes: an appraisal of the literature

Prasad Katulanda^{1,2,3,4} · Harsha A. Dissanayake¹ · Ishara Ranathunga⁵ · Vithiya Ratnasamy⁵ · Piyumi S. A. Wijewickrama⁵ · Nilukshana Yogendranathan¹ · Kavinga K. K. Gamage⁵ · Nipun L. de Silva^{5,6} · Manilka Sumanatilleke⁵ · Noel P. Somasundaram⁵ · David R. Matthews^{3,4}

Received: 1 April 2020 / Accepted: 20 April 2020 / Published online: 14 May 2020

© The Author(s) 2020

Abstract

The coronavirus disease 2019 (COVID-19) pandemic has emerged as one of the greatest challenges faced by humankind in the recent past. People with diabetes and related comorbidities are at increased risk of its complications and of COVID-19-related death. Older age, multi-morbidity, hyperglycaemia, cardiac injury and severe inflammatory response are predictors of poor outcome. The complex interplay between COVID-19, diabetes and the effects of related therapies is being explored. Most patients experience a mild illness with COVID-19, while people with diabetes are at increased risk of severe disease. Optimising glycaemic control and adopting measures to prevent disease spread are critical aspects. The management of mild disease is supportive, while very many immunomodulatory and antiviral therapies are being investigated for the treatment of severe disease. Several of these agents have specific considerations for use in people with diabetes. Since mass population lockdowns are considered a key step in controlling disease spread, it follows that, in addition to the direct vulnerability to severe COVID-19, people with diabetes can be affected by limited access to healthcare, insulin, other medications and blood glucose monitoring equipment. Measures to prevent disease spread at the individual and community level are the key to mitigating the rapidly escalating pandemic, while agents for chemoprophylaxis and vaccines are being explored. People with diabetes should be recognised as a vulnerable group for complicated disease and are at risk during times of disturbed social systems. Strategies are needed to safeguard the health of patients with diabetes during the pandemic. This review summarises the current knowledge and perceived challenges for prevention and management of COVID-19 in people with diabetes.

Keywords Coronavirus · COVID-19 · Diabetes · SARS-CoV-2

Abbreviations

ACEI	ACE inhibitor	ARDS	Acute respiratory distress syndrome
ARB	Angiotensin receptor blocker	CGM	Continuous glucose monitoring
		CoV	Coronavirus

Electronic supplementary material The online version of this article (<https://doi.org/10.1007/s00125-020-05164-x>) contains peer-reviewed but unedited supplementary material including a slideset of the figures for download, which is available to authorised users.

✉ Prasad Katulanda
prasad.katulanda@clinmed.cmb.ac.lk

✉ David R. Matthews
david.matthews@ocdem.ox.ac.uk

¹ University Medical Unit, National Hospital of Sri Lanka, Colombo, Sri Lanka

² Diabetes Research Unit, Department of Clinical Medicine, Faculty of Medicine, University of Colombo, 25, Kynsey Road, Colombo 00800, Sri Lanka

³ Harris Manchester College, University of Oxford, Oxford, UK

⁴ Oxford Centre for Diabetes, Endocrinology and Metabolism, University of Oxford, Churchill Hospital, Headington, Oxford OX3 7LE, UK

⁵ Diabetes and Endocrine Unit, National Hospital of Sri Lanka, Colombo, Sri Lanka

⁶ Department of Clinical Sciences, Faculty of Medicine, General Sir John Kotelawala Defence University, Colombo, Sri Lanka

COVID-19	Coronavirus disease 2019
CRP	C-reactive protein
DKA	Diabetic ketoacidosis
DPP4	Dipeptidyl peptidase-4
ESR	Erythrocyte sedimentation rate
GLP-1RA	Glucagon-like peptide-1 receptor agonist
ICU	Intensive care unit
MERS	Middle East respiratory syndrome
MERS-CoV	Middle East respiratory syndrome-coronavirus
NSAID	Non-steroidal anti-inflammatory drug
SARS	Severe acute respiratory syndrome
SARS-CoV	Severe acute respiratory syndrome-coronavirus (caused 2002/2003 epidemic)
SARS-CoV-2	Severe acute respiratory syndrome-coronavirus-2 (causing current COVID-19 pandemic)
SGLT2	Sodium–glucose cotransporter 2

writing it had affected over 1,800,000 individuals in more than 200 countries and territories worldwide causing over 110,000 deaths [1]. The USA and certain regions of Europe are currently experiencing the highest disease burden while it is apparently coming under control in China [2].

COVID-19 is highly transmissible from person to person through respiratory secretions. The virus enters through mucous membranes of the upper respiratory tract, later affecting lungs. [3]. In the majority of cases, COVID-19 is a mild illness, while some people develop severe disease characterised by respiratory compromise (dyspnoea; respiratory rate ≥ 30 breaths per minute; blood oxygen saturation $\leq 93\%$; $\text{PaO}_2\text{:FiO}_2 < 300$; and/or pulmonary infiltrates on $>50\%$ of lung fields on radiological imaging) [4]. A minority of patients develop critical disease with septic shock or respiratory and/or multi-organ failure. Fewer than 5% of those affected develop serious or critical illness [5], which is likely to be an over-estimate since sub-clinical infection rates in the community are unknown. Secondary pneumonic bacterial infection can be an additional problem.

Introduction

Coronavirus disease 2019 (COVID-19), caused by the severe acute respiratory syndrome-coronavirus-2 (SARS-CoV-2) virus, has become a pandemic within a few months after it was first described in Hubei province in China. At the time of

Diabetes and infections

Both type 1 and type 2 diabetes increase the susceptibility to infections and their complications [6]. Neutrophil dysfunction, reduced T cell response and disordered humoral immunity are contributory [7], and bacterial and viral respiratory

Key points

- People with diabetes developing COVID-19 are at increased risk for complications and mortality
- Adherence to healthy diet and lifestyle and access to healthcare is limited by infection control measures in the community, such as lockdown, self-isolation and quarantine
- General precautions to prevent COVID-19 infection are critical for people with diabetes and their families. Patients with multiple comorbidities need extra caution
- Continuation of good dietary practices, safe physical activities and regular glucose monitoring should be encouraged
- Measures such as telemedicine services and drug dispensing for extended durations or by home delivery should be adopted to reduce exposure of diabetes patients while ensuring uninterrupted continuity of care
- People with diabetes who develop COVID-19 should continue their routine medications unless the illness is severe
- For severe COVID-19 in diabetes patients, glycaemic control is best achieved with insulin
- SGLT2 inhibitors are best discontinued unless the illness is mild
- ACE inhibitors/ARBs should be continued unless contraindications develop or further evidence emerges against their use
- Individualised decisions should be taken on continuing aspirin and statins
- Research into pharmacological therapies for treatment and prevention of COVID-19 in people with diabetes is urgently needed

tract infections are particularly common [8]. Diabetes is associated with increased morbidity and mortality risk from pneumonia [9], and hyperglycaemia on admission for pneumonia (>11 mmol/l) predicts poor outcome [9]. During the SARS epidemic in 2002/2003, diabetes was an independent predictor of mortality risk (OR 3.0; 95% CI 1.4, 6.3; $p=0.005$) [10]. The presence of comorbidities, including diabetes, also increased mortality risk (independent of age) during the Middle East respiratory syndrome-coronavirus (MERS-CoV) epidemic in 2012 (adjusted HR 3.74; 95% CI 2.57, 5.67) [11]. In another study, diabetes had the strongest impact on mortality risk among MERS-CoV patients [12]. Similarly, among young patients with novel influenza A (H1N1) in 2009, diabetes increased the risk of intensive care unit (ICU) admissions (adjusted OR 4.72; 95% CI 1.81, 12.3) [13].

COVID-19 and diabetes

Increased risk for severe disease

According to the available evidence, people with diabetes do not have a higher susceptibility to SARS-CoV-2 infection [14]. However, observations in the recent COVID-19 pandemic are comparable to those from other epidemics, with higher rates of complications and mortality among patients with diabetes. Hypertension, diabetes, coronary artery disease and cerebrovascular disease were the main associations with severe disease (present in 23.7%, 16.2%, 5.8% and 2.3%, respectively, of people severely affected by COVID-19) [15] and mortality rate (53.8%, 42.3%, 19.2% and 15.4%, respectively, of people who died with the infection) [16]. Immunocompromised state, obesity and tobacco smoking are other risk factors for severe disease and death [3, 17, 18].

A larger study of 72,314 patients with COVID-19 in China indicated that patients with diabetes had a threefold higher mortality rate compared with the mortality rate in COVID-19 patients overall (7.3% vs 2.3%) [19]. In Italy, where the overall case fatality rate is higher (7.2%, compared with 2.3% in China), among a group of 355 COVID-19 fatalities, 35.5% had diabetes and 30% had ischaemic heart disease [20].

Older age, the presence of two or more comorbidities and obesity also predict poor prognosis among COVID-19 patients [17, 21]. These are common associations of diabetes and may contribute, at least in part, to the observed increased risk. Nevertheless, in a nationwide study of 1590 COVID-19 patients in China, after adjusting for age, smoking and comorbidities, diabetes was an independent risk factor for the composite outcome of increased ICU admission, need for ventilation and death (HR 1.59; 95% CI 1.03, 2.45; $p=0.037$) [21]. So far, no published data are available on disease severity among younger patients with type 1 diabetes,

although experts in the field have observed it to be similar to those without [22].

Prognostic markers

Similar to previous studies among patients with influenza and bacterial pneumonia, elevated serum ferritin, lactate dehydrogenase, C-reactive protein (CRP), procalcitonin and erythrocyte sedimentation rate (ESR) predicted severe disease among patients with COVID-19 [23, 24]. This may indicate secondary bacterial infection exacerbating COVID-19. Increased serum ferritin, in particular, might suggest a severe secondary bacterial infection among these patients, thereby making it useful as a cost-effective prognostic marker [23, 24]. Lymphopaenia was also associated with very severe disease [23, 24]. Raised D-dimer levels were observed in severe illness, suggesting a possible consumptive coagulopathy [25], while anticoagulation was linked to decreased mortality rate in COVID-19 patients [26].

Among 174 COVID-19 patients in Wuhan, China, people with diabetes had a greater inflammatory response (higher CRP, ESR and IL-6, and relative neutrophilia and lymphopaenia), higher incidence of coagulopathy (higher D-dimer levels), metabolic derangements (hyperglycaemia, transaminitis), severe pneumonia (higher radiological scores) and higher mortality rate, compared with those without [27]. However, people with diabetes in this study were older and had higher prevalence of cardiovascular disease. It is noteworthy that diabetes itself is a proinflammatory and prothrombotic state [28]. The data indicate that COVID-19, at least in its severe forms, is a state of severe inflammation and thrombotic tendency, so those with diabetes may be predisposed to such intense immune dysfunction resulting in severe late disease. This is further supported by the observation that renal and cardiovascular comorbidities, which add to the proinflammatory state, further worsen the outcome [27].

Elevated N-terminal pro-brain-type natriuretic peptide (NT-proBNP) and cardiac troponin I (cTnI), were significantly correlated with severe disease, suggesting that COVID-19 may lead to myocardial injury and impair cardiac function [15]. In people with diabetes and pre-existing ischaemic heart disease, limited cardiac reserve may increase morbidity and mortality risk.

ACE2, SARS-CoV-2 and diabetes

The receptor binding domain of SARS-CoV-2 uses host ACE2 for fusion of viral and host cell membranes [29]. ACE2 is a type 1 integral glycoprotein highly expressed in the kidney, endothelium, lungs and heart [30]. ACE2 converts angiotensin I and II to angiotensin-(1–9) and angiotensin-(1–7), respectively (Fig. 1). The latter acts as a vasodilator and has anti-inflammatory and cardioprotective effects. According to

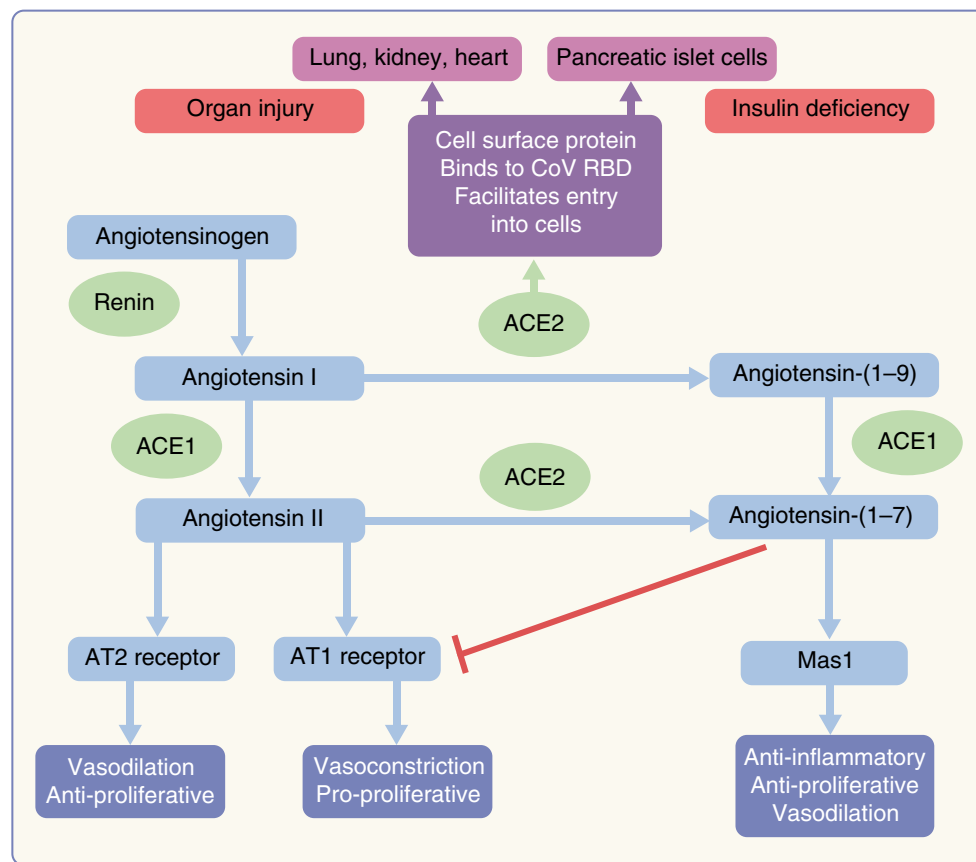


Fig. 1 Role of ACE2 in the pathogenesis of coronavirus diseases. ACE2 converts angiotensin I and angiotensin II to angiotensin-(1-9) and angiotensin-(1-7), respectively. ACE2 is also expressed in the lung, kidney, heart and pancreas and acts as a facilitator for CoV entry into cells. Use of ACEI/ARBs increases angiotensin I levels and upregulates *ACE2* gene expression. This facilitates excess viral entry into host cells causing organ injury and insulin deficiency, contributing to hyperglycaemia. Upregulated ACE2 may convert angiotensin II to angiotensin-(1-7).

animal studies, expression of ACE2 in lung tissues is low under normal conditions [31], but is upregulated during lung injury [32]. In fact, some animal studies [33] and pilot studies in humans [34] have suggested a potential therapeutic role of ACE2 against inflammatory acute lung injury. Furthermore, SARS-CoV (the virus responsible for the 2002/2003 SARS epidemic) appears to downregulate ACE2 expression in infected cells, and this is thought to perpetuate the inflammatory injury [35].

In 2003, patients with SARS had higher rates of hyperglycaemia on admission than non-SARS pneumonia patients, irrespective of their pre-morbid glycaemic status, disease severity or glucocorticoid use [10]. Subsequently SARS-CoV was shown to bind to ACE2 in pancreatic islet cells, damage them and cause acute hyperglycaemia, possibly contributing to an excessive mortality rate, even among people without diabetes [36]. A similar mechanism may operate in SARS-CoV-2 infection, contributing to hyperglycaemia, excess complications and mortality rate.

The latter acts on the Mas1 receptor to trigger anti-inflammatory effects and inhibits the AT1 receptor to cause vasodilation. However, at least in ACEI users, angiotensin II levels will be low and the net benefit of ACE2 upregulation is uncertain. CoV infection downregulates ACE2 expression, thereby reducing angiotensin-(1-7) levels, which reduces its anti-inflammatory effects and potentially worsens organ vulnerability to infection. AT, angiotensin; RBD, receptor binding domain. This figure is available as part of a [downloadable slideset](#)

Although ACE2 shares some characteristics with ACE1, it is not inhibited by ACE inhibitors (ACEI). In fact, ACEI and angiotensin receptor blockers (ARBs) upregulate ACE2 expression [37]. Therefore, it has been postulated that ACEI/ARB use might facilitate infection with SARS-CoV-2, resulting in severe disease [38, 39]. Furthermore, ACE2 gene polymorphism has been linked to increased risk of diabetes and cardiovascular disease and this may also predict susceptibility to severe CoV infection [39]. By contrast, upregulated ACE2 may increase levels of angiotensin-(1-7), mounting an anti-inflammatory effect. However, low angiotensin II levels (due to ACEI inhibition) may mitigate this benefit. Thus it is still unclear what the balance between benefit and risk might be in continuing or stopping ACE inhibition [32].

Clinical presentation and diagnosis

Following an incubation period of 2–14 days (median 5 days), the majority of people with COVID-19 will present with

cough, fever, shortness of breath and, less commonly, nausea and diarrhoea [40]. A late phase of sudden deterioration is observed in some patients after about 7–10 days of fever. This is characterised by sudden deterioration in oxygen saturation.

People with diabetes develop similar symptoms. However, the initial manifestation could be milder, fever may be less common (59.5% vs 83.2%; $p = 0.02$), and deterioration could occur rapidly in later stages [27]. Deteriorating glycaemic control and hyperglycaemic emergencies may be a presenting feature, and those with type 1 diabetes may present with diabetic ketoacidosis (DKA) [41].

Real-time reverse transcription PCR (rRT-PCR) remains the gold standard for diagnosis of SARS-CoV-2 infection [42]. However, its use is limited by cost, the need for technology and expertise, and limited availability in resource-poor settings. IgM-based rapid diagnostic tests and other ELISA-based serological tests are being developed. Their key limitation is poorer early sensitivity because it typically takes 5 to 7 days for patients to seroconvert [43]. Tests for viral antigen detection are also being developed.

Management considerations

People with diabetes need timely integrated interventions to prevent them acquiring the disease. Enhanced self-management, supportive healthcare services and public health measures need to be in place (Fig. 2). If the illness is contracted, it should be promptly recognised and supportive measures instituted, with specific attention to glycaemic control. Further advice on this can be found in the EASD e-Learning portal: <https://easd-elearning.org/covid-19/>.

Patients with diabetes at risk of COVID-19

The COVID-19 pandemic is far from being solely a medical phenomenon. It disrupts personal and professional lives severely and affects people and societies on several levels. The key strategies promoted for containment of an outbreak such as isolation, social distancing and lockdown of cities can have a significant impact on the health and lifestyle of an individual. Management of a chronic disease such as diabetes, which requires dietary modification, regular exercise and good adherence to medications, poses many complex challenges.

Maintaining a healthy diet may be challenging because of limited access to appropriate food. Careful portion selection and adjusting mealtime insulin according to carbohydrate intake continues to be the best strategy, particularly for patients on multiple-dose insulin regimens.

Adopting a regular exercise plan might not be feasible owing to social distancing, restrictions on outdoor activities and concerns over the high risk of disease spread in gyms and sports centres (many of which are closed during lockdown,

depending on regional restrictions). Activities such as indoor walking, gardening and stationary high intensity activities may be suitable alternatives to maintain an active lifestyle.

Regular monitoring of blood glucose is important. Continuous glucose monitoring (CGM) and flash glucose monitoring systems are useful and allow remote monitoring by healthcare providers (however see below under ‘Management of patients with diabetes and COVID-19’ for possible concerns regarding the use of paracetamol/acetaminophen alongside CGM). For patients with type 1 diabetes, monitoring of ketone levels (particularly for people who are persistently hyperglycaemic) and vigilance for the development of symptoms of DKA are important.

It is also important that people with diabetes have an adequate supply of their medications at home. In fact, increased incidence of DKA among children with type 1 diabetes has been observed due to a delay in seeking medical treatment and in providing routine healthcare for newly developed symptoms, as patients are afraid of contracting COVID-19 from healthcare settings [22].

Routine clinic visits and overcrowding in hospitals should be minimised to reduce disease spread among people with diabetes. Measures such as telemedicine consultations or telephone advice, issue of medication to caregivers at lower risk, online coordination of drug delivery, and dispensing medications for extended periods should be considered by healthcare providers. Non-emergency routine evaluations (for foot disease, retinopathy etc.) should be deferred, as close contact between the healthcare providers and patients may lead to increased risk of COVID-19 transmission. Patients with limb-threatening or vision-threatening complications should be triaged for immediate attention.

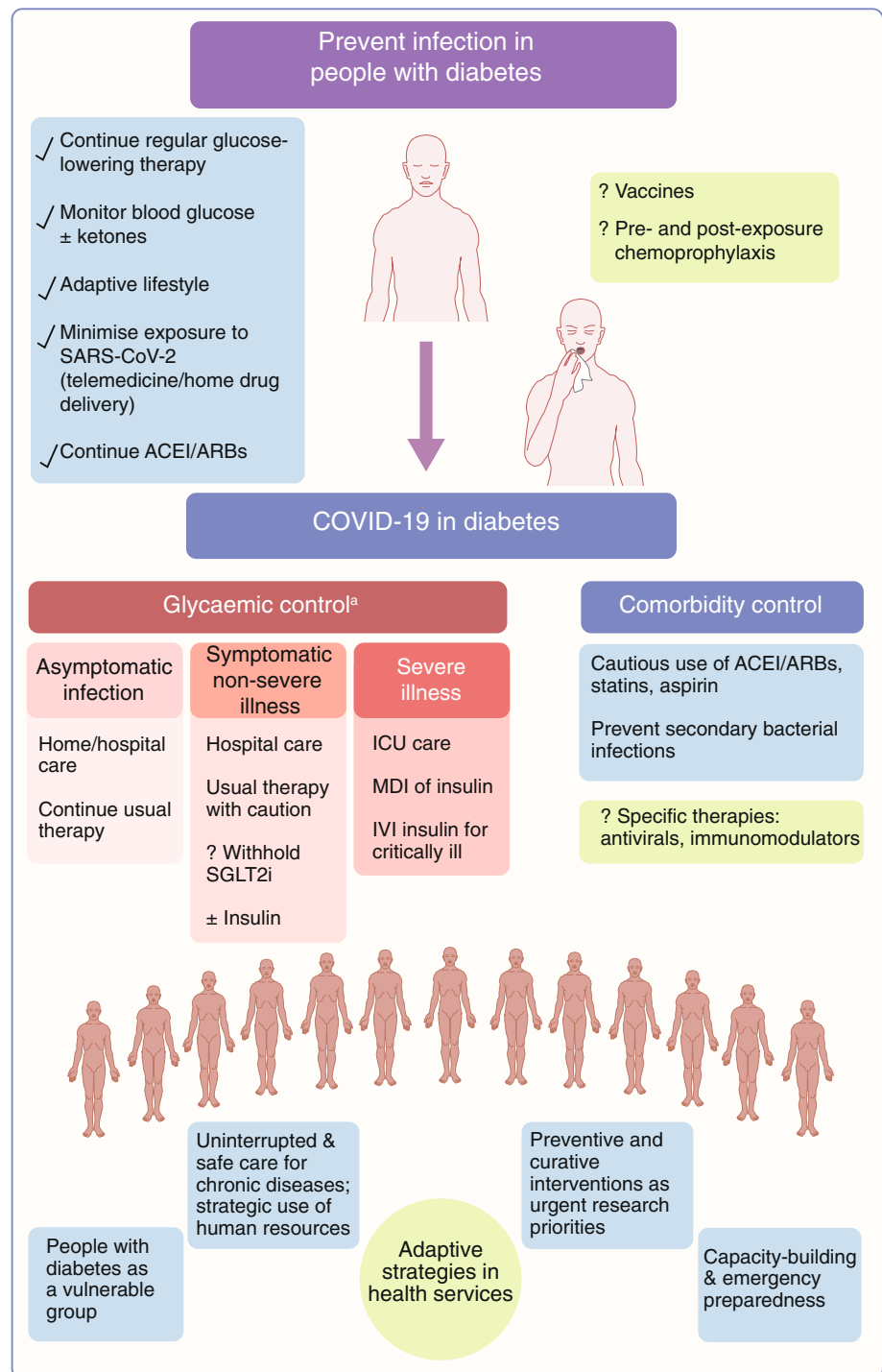
During this time of uncertainty, fear, helplessness and strong emotions may increase stress in some patients. It is important to ensure psychological wellbeing, as stress may adversely affect glycaemic control. The WHO recommends minimising reading or listening to news that could cause distress and anxiety. Regular sleep routines are important. Relaxation techniques such as meditation can help people with stress and anxiety. Maintaining contact with relatives, friends and neighbours via telephone conversations or using online communication platforms can help to reduce the effects of social isolation [44].

Employers should consider work from home strategies, or furlough, for employees with poorly controlled diabetes or those with cardiac or renal complications, particularly for those in high risk occupations such as frontline healthcare work or similar high risk jobs, and especially in areas with high COVID-19 prevalence.

Management of patients with diabetes and COVID-19

Setting and general considerations The majority of people with COVID-19 will develop a mild disease that can be

Fig. 2 COVID-19 preventive and management considerations for people with diabetes at an individual level and from a healthcare service perspective. ^aOwing to limited evidence, and risk of dehydration and euglycaemic ketoacidosis, it may be advisable to discontinue SGLT2 inhibitors until recovering from acute illness and/or until further evidence is available. Insulin is safe, provided glycaemic status is regularly monitored and treatment is adjusted. Other agents should be used with caution, particularly in hospitalised patients. IVI, intravenous infusion; MDI, multiple daily injections. This figure is available as part of a [downloadable slideset](#)



managed at home according to local guidelines. Patients with diabetes developing symptoms suggestive of COVID-19 infection should immediately notify local healthcare services to determine the need for diagnostic evaluation, assessment of severity, isolation and the need for hospitalisation. Because there is a higher risk of adverse outcomes, patients with diabetes should be preferentially managed in hospitals or settings where close monitoring of disease progression is

possible. For those managed at home, regular telephone contact with healthcare services and follow-up is crucial to recognise deterioration in glycaemic control, development of hyperglycaemic emergencies or deterioration of clinical status.

Frequent glucose monitoring, healthy diet, adequate hydration and dose titration of glucose-lowering medication in liaison with healthcare providers should be prioritised. Patients

may take symptomatic therapy, including paracetamol/acetaminophen, which is the preferred anti-pyretic agent [45]. However, paracetamol may interfere with the accuracy of certain CGM sensors [46]. In such situations serial capillary blood sugar monitoring can be adopted [47]. The use of non-steroidal anti-inflammatory drugs (NSAIDs), including ibuprofen, for symptom relief has raised several concerns; its suppressive effect on immune response is thought to delay recovery, while salt and water retention could worsen lung injury [48]. NSAIDs are also thought to upregulate ACE2 (see previous section ‘ACE2, SARS-CoV-2 and diabetes’) [39].

Glycaemic control The importance of good glycaemic control during the COVID-19 pandemic is emphasised [49]. As this is a new viral infection, the data are limited and so expert recommendations conform with strategies used in similar epidemics [47]. Patients with mild COVID-19 can be managed with their usual glucose-lowering agents as long as they are able to eat and drink satisfactorily. Patients should adhere to the ‘sick day rules’ for people with diabetes [50], and frequent monitoring of capillary glucose is important. Patients who develop severe illness are likely to need treatment modifications. Multiple factors including glycaemic status, haemodynamic stability, nutritional status, renal function, risk of hypoglycaemia, drug interactions and the availability of medications influence the decision making. There are specific concerns in relation to glucose-lowering agents when used in patients with COVID-19 (Table 1). Metformin may be stopped in patients who are hospitalised and acutely ill, owing to the risk of lactic acidosis [51]. In severe COVID 19 infection, the hypoxic state may further increase the risk of lactic acidosis.

Although there are no specific data on sodium–glucose cotransporter 2 (SGLT2) inhibitor use during COVID-19 infection, it is advisable to withhold these during acute illness because of the increased risk of dehydration and euglycaemic ketoacidosis [52, 53], as well as difficulties in maintaining usual perineal hygiene. Glucagon-like peptide-1 receptor agonist (GLP-1RA) therapy should probably be temporarily discontinued in patients with haemodynamic instability (which compromises absorption from subcutaneous sites), renal dysfunction, and gastrointestinal dysfunction (which prevents adequate oral intake). Treatment with GLP-1RAs may cause gastrointestinal side effects, predisposing to volume depletion and aspiration [54]. Dipeptidyl peptidase-4 (DPP4) inhibitors are associated with low risk of hypoglycaemia and are relatively safe across a wide range of renal functions. DPP4 inhibitors added to basal insulin improve glycaemic control without increasing the risk of hypoglycaemia, even among hospitalised patients [55]. However, these agents are likely to be of less therapeutic benefit in patients with severe COVID-19. While patients with mild symptoms could continue DPP4 inhibitors, these should

Table 1 The use of pharmacotherapies for diabetes and related comorbidities during COVID-19

Therapy	Considerations for use during COVID-19	Suggestions for practice
Metformin	Risk of lactic acidosis in hypoxia and acute illness	Stop if severely ill with haemodynamic instability or hypoxia
SGLT2 inhibitors	Increased risk of dehydration and euglycaemic ketoacidosis	Stop if oral intake is not tolerated or severely ill
GLP-1RAs	Gastrointestinal side effects and risk of aspiration	Stop in severely ill patients
DPP4 inhibitors	Low risk of hypoglycaemia; possible to use for a wide range of renal function	May be continued in non-critically ill patients
Sulfonylureas	Risk of hypoglycaemia if oral intake is poor or with concomitant use of hydroxychloroquine or chloroquine	Stop if unable to maintain regular oral food intake or at risk of hypoglycaemia
Pioglitazone	Risk of fluid retention and oedema; contraindicated in haemodynamic instability	Stop if severely ill with haemodynamic instability, or hepatic or cardiac dysfunction
Insulin	Requires frequent monitoring due to risk of hypoglycaemia	Drug of choice in critically ill patients (see text)
ACEI/ARBs	Uncertain risk of increased susceptibility for infection and uncertain benefit in mitigating inflammatory injury	Continue use unless a specific contraindication arises (hypotension, hyperkalaemia, acute kidney injury)
Aspirin	Risk of cardiovascular disease higher during COVID infection	Continue for patients on aspirin for secondary prevention unless contraindications arise
Statins	Possibility of increased risk of transaminitis and myositis	Individualised decision on risk and benefit

be omitted in acute severe illness and replaced with insulin if this becomes necessary. During a severe illness, fine control of blood glucose is difficult when using sulfonylureas. In such patients, sulfonylureas should be replaced with insulin. Caution with sulfonylureas also needs to be exercised if chloroquine is considered, because of risk of hypoglycaemia with both. Thiazolidinediones (e.g. pioglitazone) are a less favourable option for in-hospital management of acutely ill patients, because of fluid retention and oedema. They are contraindicated in patients with haemodynamic instability, or hepatic or cardiac dysfunction, which may be seen in severe COVID-19 infection [56].

Existing evidence favours insulin over other glucose-lowering agents for glycaemic control in hospitalised patients. For non-critically ill hospitalised patients, subcutaneous

insulin therapy with basal or intermediate-acting insulin given once or twice a day, along with mealtime boluses of short- or rapid-acting insulin, is the preferred strategy for glycaemic management [57]. Sliding scale therapy should probably not be practiced as this results in greater fluctuations and poor overall control [58]. For critically ill patients, insulin therapy should be initiated with a glycaemic target of 7.8–10 mmol/l (140–180 mg/dl) [59]. Less stringent glycaemic control with target glucose concentrations >10 mmol/l (180 mg/dl) may be acceptable in terminally ill patients, in patients with severe comorbidities, and in patient care settings where frequent glucose monitoring or close nursing supervision is not feasible. Less aggressive insulin regimens aimed at simply minimising glucosuria, dehydration and electrolyte disturbances may be justifiable in such patients. Although there are no strict guidelines regarding the insulin regimen for glycaemic control in critically ill patients, intravenous insulin infusions and short or rapid-acting insulin boluses may be used. Disease severity, nutritional status, concomitant medications and trend of glycaemic fluctuations should be considered in determining insulin dosage [60].

In patients with type 1 diabetes with COVID-19 and hyperglycaemia, it is important to monitor the blood glucose and ketone levels, maintain hydration and continue insulin therapy.

Strict infection control measures should be implemented for COVID-19 patients with diabetes irrespective of where they are treated, considering their vulnerability to acquiring secondary bacterial infections, with potential serious consequences.

Medical therapy for comorbidities ACEI/ARBs are essential in management of hypertension, heart failure and diabetic nephropathy. Considering the contrasting effects of ACE2 on CoV infection and inflammatory lung injury (see above and Fig. 1), it is difficult to predict the possible clinical outcomes. To date, no clear evidence exists for or against the use of ACEI/ARBs in people with diabetes at risk or infected with SARS-CoV-2, despite the speculations for potential adverse effects [39]. There are clear competing risks in stopping, since the control of hypertension and the protection

against renal disease may be compromised. At present, most international organisations have recommended continuation of ACEI/ARBs, unless there are explicit contraindications such as hypotension or acute kidney injury [32, 61].

There is no clear evidence of risks associated with continuing aspirin. Although myocardial injury is a well-known serious manifestation of COVID-19, acute myocardial ischaemia is not clearly described. Concerns of atherosclerotic plaque accidents and increased acute ischaemic strokes exist [62, 63]. Until further data are available, it would be appropriate to continue aspirin for patients with indication for secondary prevention unless specific individual concerns such as gastrointestinal bleeding are noted.

At present, there is no direct evidence for or against continuation of statins in patients with diabetes and COVID-19. There are preliminary reports of raised liver enzymes and muscle enzymes associated with COVID-19 although severe liver disease or rhabdomyolysis are not characteristic [64]. Therefore we suggest an individualised decision considering the indication for statin therapy as well as possible drug interactions with antiviral agents.

Specific therapies for COVID-19 in people with diabetes

Several authorities have proposed guidelines and protocols for the management of COVID-19 (electronic supplementary material [ESM] Table 1). However, dedicated guidance for management of COVID-19 in people with diabetes has not been formulated. Most guidelines suggest that treatment should be limited to patients with virologically confirmed COVID-19 (ESM Table 1). Although no drug has robust evidence on specific antiviral efficacy or on clinical outcomes in the treatment of COVID-19, several medications are being used on the basis of limited clinical data, or being tested in clinical trials. Safety concerns of candidate agents should be weighed against their relative benefit. There are specific concerns in relation to some of these agents for people with diabetes (Table 2). In situations where compassionate or off label anti-COVID-19 therapy is considered this is best done within systematic clinical trials.

Table 2 Concerns for people with diabetes in using proposed therapeutic agents for COVID-19

Therapeutic agent	Considerations for people with diabetes
Chloroquine/ hydroxychloroquine	<ul style="list-style-type: none"> • Hypoglycaemia: caution with insulin and insulin secretagogues • Prolongation of QT interval: caution in people with comorbid cardiovascular disease. Risk increased by azithromycin
Lopinavir/ritonavir	<ul style="list-style-type: none"> • Hyperglycaemia, deterioration of glycaemic control • Interaction with statins: increased risk of hepatic and muscle toxicity
Glucocorticoids	<ul style="list-style-type: none"> • Hyperglycaemia • Susceptibility to secondary bacterial infection
Remdesivir	<ul style="list-style-type: none"> • Hepatotoxicity: caution with statins and pre-existing fatty liver disease

Immunomodulators Cytokine release syndrome (‘cytokine storm’) is thought to be central to the pathogenesis of rapid deterioration and multi-organ dysfunction in patients with COVID-19. Therefore, immunomodulatory agents are postulated to be of benefit.

1. Chloroquine/hydroxychloroquine These two antimalarial agents have attracted much attention in the treatment of COVID-19 on the basis of limited clinical experience, as well as due to political reasons. Chloroquine has shown antiviral and anti-inflammatory properties in previous experimental studies [65]. Hydroxychloroquine has shown superior potency compared with chloroquine in experimental studies [66] and has a more favourable safety profile, probably because it has a lower level of tissue accumulation [67].

A study from France, involving 36 virologically confirmed patients with COVID-19, showed that chloroquine, at a dose of 600 mg a day for 10 days, reduced the virus carriage significantly at 6 days of therapy compared with standard care [68]. However, this was a non-randomised study, recruited less than the estimated sample size, was under-powered for assessment of clinical outcomes, had differences between intervention and control groups (older mean age and higher azithromycin use in intervention group) and a higher dropout rate in the intervention arm (due to 3 ICU admissions, 1 death, 2 withdrawals of consent), emphasising the need for very cautious interpretation.

A systematic review of literature by Cortegiani et al. concluded that evidence is limited to experimental in vitro studies showing antiviral potency of chloroquine/hydroxychloroquine [69]. More than 20 ongoing randomised clinical trials are investigating the utility of these agents (Solidarity trial for hydroxychloroquine and remdesivir [WHO, NCT04321616]; several studies from China [70] and Minnesota University [COVID-19 PEP trial: hydroxychloroquine for post-exposure prophylaxis and pre-emptive therapy of COVID-19, NCT04308668]).

There are specific safety concerns for people with diabetes, as hypoglycaemia is a known adverse effect of chloroquine/hydroxychloroquine treatment. Suggested mechanisms are decreased intra-cellular insulin degradation, increased insulin-mediated glucose transport, increased insulin release and enhanced insulin sensitivity [71]. Therefore, extra caution should be exercised when used with other glucose lowering agents and dose reduction may become necessary.

Prolongation of the QT interval and serious cardiac arrhythmias are known, albeit rare, dose-dependent adverse effects of chloroquine/hydroxychloroquine. The risk is greater in those with pre-existing cardiac disorders, especially comorbid coronary artery disease and diminished cardiac reserve. COVID-19 itself is known to induce myocardial injury, adding to the risk. Regular ECG monitoring before and while on therapy is recommended. Some guidelines recommend against combining

with other QT prolonging agents such as azithromycin, lopinavir/ritonavir while others recommend cautious use (ESM Table 1).

2. Glucocorticoids Although glucocorticoids are used in the treatment of severe acute respiratory distress syndrome (ARDS), data for their use in ARDS caused by viral pneumonia are minimal and therefore they are not recommended for routine use in COVID-19 [72]. The place of glucocorticoids in the treatment of COVID-19 is being investigated (NCT04273321). If they are used in patients with diabetes, hyperglycaemia may worsen, necessitating escalation of insulin therapy.

Antivirals The FDA has authorised emergency use of remdesivir, which, although not affecting mortality, significantly shortens the course of the disease [73]. Further studies are in progress to evaluate this treatment as well as other antiviral agents (ESM Tables 2 and 3). If proven to be effective among patients without diabetes, it is likely that patients with diabetes would also benefit from such therapeutic agents, although caution should always be exercised in patients with multi-morbidity.

Glucose-lowering agents as potential therapeutic option for COVID 19

1. Metformin Yu et al. showed that metformin reversed lipopolysaccharide-induced pulmonary oedema, vascular leakage and neutrophil accumulation, and reduced the levels of TNF- α , IL-1 β , IL-6 and IL-17 in an ARDS model [74]. Patients with severe SARS-CoV-2 develop ARDS, which is mediated by dysregulated immune response producing a cytokine storm. However, hypoxia in severe disease limits its use due to a risk of lactic acidosis. Further research is needed regarding the role of metformin as a host-directed treatment for severe COVID -19 [75].

2. Incretin based therapies DPP4 is a ubiquitous type II transmembrane glycoprotein expressed in many cells, including the alveolar epithelium and inflammatory cells. MERS-CoV uses DPP4 to gain entry into host cells [76]. DPP4 inhibition mitigated inflammatory response in experimental studies [77]. It is not known if SARS-CoV-2 uses DPP4 for cell entry. To date, neither benefit nor harm has been shown in humans on DPP4 inhibitors during CoV infections. Therefore, DPP4 inhibitors could be continued, at least in mild cases of COVID-19, while potential benefit in treating CoV infection remains to be studied further [78]. Similarly, GLP-IRAs are known to have anti-inflammatory effects and have shown potential for therapeutic benefit in acute lung injury [79]. However data are limited to experimental models and their benefit, at best, remains speculative.

Prevention of COVID-19 in people with diabetes

General precautions are mandatory for patients and caregivers, to prevent contracting COVID-19 (Text box: General precautions to prevent COVID-19 in people with diabetes). Chemoprophylaxis (pre- and post-exposure) and vaccines are other strategies under evaluation.

Chemoprophylaxis

No agent had been approved so far for pre- or post-exposure chemoprophylaxis. Evidence from randomised clinical trials is urgently needed. Chloroquine has demonstrated antiviral activity against five out of seven known human coronaviruses, including COVID-19 [80] and is a leading candidate for prophylactic use [81]. Ongoing trials in China have yielded encouraging preliminary findings [70], but the data are generally contentious. Several other trials are in progress: the PHYDRA Trial (NCT04318015) and COPCOV study (NCT04303507). Patients with diabetes are also included in these studies. A cluster-randomised controlled trial is planned to evaluate the use of lopinavir/ritonavir in post-exposure prophylaxis (NCT04321174).

Vaccines

A safe and potent vaccine would obviously be very useful for high risk individuals, such as those with diabetes or cardiovascular disease and the elderly. Several vaccines are being investigated: the APICTH trial: recombinant novel coronavirus vaccine (adenovirus type 5 vector) (NCT04313127); mRNA-1273 vaccine (NCT04283461) and artificial antigen-presenting cells (aAPCs) as a vaccine (NCT04299724).

Future directions

COVID-19 has emerged as one of the greatest challenges for humankind after the Second World War. Identification of effective preventive and treatment strategies is urgently needed. People with diabetes and related comorbidities have been shown to fare worse, although the pathophysiological and molecular mechanisms behind this link are not yet fully understood. Researchers and authorities worldwide should take urgent steps to answer critical questions in the prevention and management of COVID-19 and the protection of people with diabetes (Text box: Unanswered questions).

It is imperative to establish standard case definitions, data collection, recording and sharing strategies and operational guidelines to allow comparison and analysis of data. Standardisation of research protocols and identification of research priorities is essential to utilise time and resources productively. The role of pharmaceutical agents in the prevention and treatment of COVID-19, in terms of their efficacy, safety and cost effectiveness, should be evaluated as a priority. Further data are needed, especially looking at the effects of ACEI/ARBs and SGLT2 inhibitors in those infected, as well as in the severely ill.

Healthcare systems should adopt strategies for case detection and treatment while maintaining care and supply of essential medicines for people with chronic diseases such as diabetes, to reduce morbidity and mortality risk due to such diseases during this period. The strategic utilisation of human resources in healthcare services and safeguarding their health is a timely need. The current challenge for healthcare systems should be an opportunity to improve service provision, learn from successful regional and global strategies and prepare for future

General precautions to prevent COVID-19 in people with diabetes

Hygiene and social distancing: as widely recommended
Glycaemic control
<ul style="list-style-type: none"> • Continue regular medication • Regular glucose monitoring: consider dose adjustments to match diet and physical activity • Ketone level monitoring: in patients with type 1 diabetes or insulin-treated type 2 diabetes, especially if persistently hyperglycaemic
Healthy lifestyle
<ul style="list-style-type: none"> • Healthy diet: ensure regular meals; follow advice for healthy eating in diabetes; limit refined sugars and carbohydrates; consume adequate vegetables, fruit, green leaves and nuts • Physical activity: indoor exercise and walking; minimise sedentary/sitting time; online exercise programmes; regular active breaks • Avoid smoking; minimise or avoid alcohol • Stress management
Comorbidity control and routine vaccinations (pneumococcal and seasonal influenza)

Unanswered questions

- Are people with diabetes at increased risk of contracting COVID-19?
- Is the presence of diabetes an independent risk factor for death in those infected?
- Does type 1 diabetes increase the susceptibility to and/or severity of COVID-19?
- Does pre-morbid glycaemic control predict susceptibility to and/or prognosis of COVID-19 in people with diabetes?
- Are SGLT2 inhibitors and ACEI/ARBs safe in people with diabetes who are at risk of or infected with SARS-CoV-2? Should they be prescribed or discontinued?
- Are immunomodulators and/or antivirals effective and safe for prevention and treatment of COVID-19 in people with diabetes?

challenges of greater magnitude. The pandemic also highlights the need for joined-up public health measures and care-for-all policies.

Acknowledgements We acknowledge National Science Foundation, Sri Lanka and National Institute for Health Research, UK for research funding for Diabetes Research Unit, Faculty of Medicine, University of Colombo, Sri Lanka.

Funding This work received no specific grant from any funding agency in the public, commercial or not-for-profit sectors.

Authors' relationships and activities The authors declare that there are no relationships or activities that might bias, or be perceived to bias, their work.

Contribution statement PK developed the review objectives and manuscript outline. NLS, HAD, KKKG, IR, VR, PSAW and NY conducted the literature search and drafted the manuscript. PK, NPS, MS and DRM supervised the manuscript writing and critically reviewed the final draft. All authors read and approved the submitted manuscript.

Open Access This article is licensed under a Creative Commons Attribution 4.0 International License, which permits use, sharing, adaptation, distribution and reproduction in any medium or format, as long as you give appropriate credit to the original author(s) and the source, provide a link to the Creative Commons licence, and indicate if changes were made. The images or other third party material in this article are included in the article's Creative Commons licence, unless indicated otherwise in a credit line to the material. If material is not included in the article's Creative Commons licence and your intended use is not permitted by statutory regulation or exceeds the permitted use, you will need to obtain permission directly from the copyright holder. To view a copy of this licence, visit <http://creativecommons.org/licenses/by/4.0/>.

References

1. Woldometer (2020) COVID-19 coronavirus pandemic. Available from <https://www.worldometers.info/coronavirus/>. Accessed 13 Apr 2020
2. World Health Organization HO (2020) Coronavirus disease 2019 (COVID-19) situation report–62. Available from <https://www.who.int/emergencies/diseases/novel-coronavirus-2019/situation-reports>. Accessed 22 Mar 2020
3. Lin L, Lu L, Cao W, Li T (2020) Hypothesis for potential pathogenesis of SARS-CoV-2 infection—a review of immune changes in patients with viral pneumonia. *Emerg Microbes Infect* 9(1):727–732. <https://doi.org/10.1080/22221751.2020.1746199>
4. World Health Organization (2020) Report of the WHO–China Joint Mission on coronavirus disease 2019 (COVID-19). Available from [https://www.who.int/publications-detail/report-of-the-who-china-joint-mission-on-coronavirus-disease-2019-\(covid-19\)](https://www.who.int/publications-detail/report-of-the-who-china-joint-mission-on-coronavirus-disease-2019-(covid-19)). Accessed 20 Apr 2020
5. Whitworth J (2020) COVID-19: a fast evolving pandemic. *Trans R Soc Trop Med Hyg* 114(4):241–248. <https://doi.org/10.1093/trstmh/traa025>
6. Carey IM, Critchley JA, DeWilde S, Harris T, Hosking FJ, Cook DG (2018) Risk of infection in type 1 and type 2 diabetes compared with the general population: a matched cohort study. *Diabetes Care* 41(3):513–521. <https://doi.org/10.2337/dc17-2131>
7. Geerlings SE, Hoepelman AI (1999) Immune dysfunction in patients with diabetes mellitus (DM). *FEMS Immunol Med Microbiol* 26(3–4):259–265. <https://doi.org/10.1111/j.1574-695X.1999.tb01397.x>
8. Peleg AY, Weerathna T, McCarthy JS, Davis TM (2007) Common infections in diabetes: pathogenesis, management and relationship to glycaemic control. *Diabetes Metab Res Rev* 23(1): 3–13. <https://doi.org/10.1002/dmrr.682>
9. Komum JB, Thomsen RW, Riis A, Lervang HH, Schonheyder HC, Sorensen HT (2007) Type 2 diabetes and pneumonia outcomes: a population-based cohort study. *Diabetes Care* 30(9):2251–2257. <https://doi.org/10.2337/dc06-2417>
10. Yang JK, Feng Y, Yuan MY et al (2006) Plasma glucose levels and diabetes are independent predictors for mortality and morbidity in patients with SARS. *Diabet Med* 23(6):623–628. <https://doi.org/10.1111/j.1464-5491.2006.01861.x>
11. Yang YM, Hsu CY, Lai CC et al (2017) Impact of comorbidity on fatality rate of patients with Middle East respiratory syndrome. *Sci Rep* 7(1):11307. <https://doi.org/10.1038/s41598-017-10402-1>
12. Garbati MA, Fagbo SF, Fang VJ et al (2016) A comparative study of clinical presentation and risk factors for adverse outcome in patients hospitalised with acute respiratory disease due to MERS coronavirus or other causes. *PLoS One* 11(11):e0165978. <https://doi.org/10.1371/journal.pone.0165978>
13. Allard R, Leclerc P, Tremblay C, Tannenbaum TN (2010) Diabetes and the severity of pandemic influenza A (H1N1) infection. *Diabetes Care* 33(7):1491–1493. <https://doi.org/10.2337/dc09-2215>

14. Fadini GP, Morieri ML, Longato E, Avogaro A (2020) Prevalence and impact of diabetes among people infected with SARS-CoV-2. *J Endocrinol Investig*. <https://doi.org/10.1007/s40618-020-01236-2>
15. Chen C, Yan JT, Zhou N, Zhao JP, Wang DW (2020) Analysis of myocardial injury in patients with COVID-19 and association between concomitant cardiovascular diseases and severity of COVID-19. *Zhonghua Xin Xue Guan Bing Za Zhi* 48(0):E008. <https://doi.org/10.3760/cma.j.cn112148-20200225-00123> [article in Chinese]
16. Guan WJ, Ni ZY, Hu Y et al (2020) Clinical characteristics of coronavirus disease 2019 in China. *N Engl J Med*. <https://doi.org/10.1056/NEJMoa2002032>
17. Dietz W, Santos-Burgoa C (2020) Obesity and its implications for COVID-19 mortality. *Obesity* (Silver Spring). <https://doi.org/10.1002/oby.22818>
18. Vardavas CI, Nikitara K (2020) COVID-19 and smoking: a systematic review of the evidence. *Tob Induc Dis* 18:20
19. Wu Z, McGoogan JM (2020) Characteristics of and important lessons from the coronavirus disease 2019 (COVID-19) outbreak in China: summary of a report of 72314 cases from the Chinese Center for Disease Control and Prevention. *JAMA*. 323(13):1239. <https://doi.org/10.1001/jama.2020.2648>
20. Onder G, Rezza G, Brusaferro S (2020) Case-fatality rate and characteristics of patients dying in relation to COVID-19 in Italy. *JAMA*. <https://doi.org/10.1001/jama.2020.4683>
21. Guan WJ, Liang WH, Zhao Y et al (2020) Comorbidity and its impact on 1590 patients with Covid-19 in China: a nationwide analysis. *Eur Respir J*:2000547. <https://doi.org/10.1183/13993003.00547-2020>
22. International Society for Paediatric and Adolescent Diabetes (2020) Summary of recommendations regarding COVID-19 in children with diabetes: keep calm and mind your diabetes care and public health advice. Available from: <https://www.ispad.org/page/CoronavirusinfectionCOVID-19-IIISPADSummary>. Updated 25 Mar 2020; accessed 8 Apr 2020
23. Zhou F, Yu T, Du R et al (2020) Clinical course and risk factors for mortality of adult inpatients with COVID-19 in Wuhan, China: a retrospective cohort study. *Lancet* 395(10229):1054–1062. [https://doi.org/10.1016/S0140-6736\(20\)30566-3](https://doi.org/10.1016/S0140-6736(20)30566-3)
24. Chen G, Wu, D, Guo, W et al (2020) Clinical and immunological features in severe and moderate forms of Coronavirus disease 2019. *J Clin Invest* 137244. doi: <https://doi.org/10.1172/JCI137244>
25. Zhang JJ, Dong X, Cao YY et al (2020) Clinical characteristics of 140 patients infected with SARS-CoV-2 in Wuhan, China. *Allergy*. <https://doi.org/10.1111/all.14238>
26. Tang N, Bai H, Chen X, Gong J, Li D, Sun Z (2020) Anticoagulant treatment is associated with decreased mortality in severe coronavirus disease 2019 patients with coagulopathy. *J Thromb Haemost*. <https://doi.org/10.1111/jth.14817>
27. Guo W, Li M, Dong Y et al (2020) Diabetes is a risk factor for the progression and prognosis of COVID-19. *Diabetes Metab Res Rev* e3319. doi: <https://doi.org/10.1002/dmrr.3319>
28. Tsalamandris S, Antonopoulos AS, Oikonomou E et al (2019) The role of inflammation in diabetes: current concepts and future perspectives. *Eur Cardiol* 14(1):50–59. <https://doi.org/10.15420/eur.2018.33.1>
29. Letko M, Marzi A, Munster V (2020) Functional assessment of cell entry and receptor usage for SARS-CoV-2 and other lineage B betacoronaviruses. *Nat Microbiol* 5(4):562–569. <https://doi.org/10.1038/s41564-020-0688-y>
30. Iwai M, Horiuchi M (2009) Devil and angel in the renin–angiotensin system: ACE–angiotensin II–AT1 receptor axis vs. ACE2–angiotensin-(1-7)–Mas receptor axis. *Hypertens Res* 32(7):533–536. <https://doi.org/10.1038/hr.2009.74>
31. Serfozo P, Wysocki J, Gulua G et al (2020) Ang II (angiotensin II) conversion to angiotensin-(1-7) in the circulation is POP (prolyl oligopeptidase)-dependent and ACE2 (angiotensin-converting enzyme 2)-independent. *Hypertension* 2020 75(1): 173–182. <https://doi.org/10.1161/HYPERTENSIONAHA.119.14071>
32. Vaduganathan M, Vardeny O, Michel T, McMurray JJV, Pfeffer MA, Solomon SD (2020) Renin–angiotensin–aldosterone system inhibitors in patients with Covid-19. *N Engl J Med* 382(17):1653–1659. <https://doi.org/10.1056/NEJMs2005760>
33. Imai Y, Kuba K, Rao S et al (2020) Angiotensin-converting enzyme 2 protects from severe acute lung failure. *Nature* 436(7047):112–116. <https://doi.org/10.1038/nature03712>
34. Khan A, Benthin C, Zeno B et al (2017) A pilot clinical trial of recombinant human angiotensin-converting enzyme 2 in acute respiratory distress syndrome. *Crit Care* 21(1):234. <https://doi.org/10.1186/s13054-017-1823-x>
35. Gu J, Korteweg C (2007) Pathology and pathogenesis of severe acute respiratory syndrome. *Am J Pathol* 170(4):1136–1147. <https://doi.org/10.2353/ajpath.2007.061088>
36. Yang JK, Lin SS, Ji XJ, Guo LM (2009) Binding of SARS coronavirus to its receptor damages islets and causes acute diabetes. *Acta Diabetol* 47(3):193–199. <https://doi.org/10.1007/s00592-009-0109-4>
37. Furuhashi M, Moniwa N, Mita T et al (2014) Urinary angiotensin-converting enzyme 2 in hypertensive patients may be increased by olmesartan, an angiotensin II receptor blocker. *Am J Hypertens* 28(1):15–21. <https://doi.org/10.1093/ajh/hpu086>
38. Wan Y, Shang J, Graham R, Baric RS, Li F (2020) Receptor recognition by the novel coronavirus from Wuhan: an analysis based on decade-long structural studies of SARS coronavirus. *J Virol* 94(7): e00127–e00120. <https://doi.org/10.1128/JVI.00127-20>
39. Fang L, Karakiulakis G, Roth M (2020) Are patients with hypertension and diabetes mellitus at increased risk for COVID-19 infection? *Lancet Respir Med* 8(4):e21. [https://doi.org/10.1016/S2213-2600\(20\)30116-8](https://doi.org/10.1016/S2213-2600(20)30116-8)
40. Center for Disease Control and Prevention (2020) How to protect yourself?: Coronavirus disease 2019 (COVID-19). Available from: <https://www.cdc.gov/coronavirus/2019-ncov/prevent-getting-sick/prevention.html>. Accessed 29 Mar 2020
41. American Diabetes Association (2020) How COVID-19 affects people with diabetes. Available from: <https://www.diabetes.org/coronavirus-covid-19/how-coronavirus-impacts-people-with-diabetes>. Accessed 8 Apr 2020
42. MacIntosh K (2020) Coronavirus disease 2019 (COVID-19): epidemiology, virology, clinical features, diagnosis, and prevention. UpToDate. Available from: <https://www.uptodate.com/contents/coronavirus-disease-2019-covid-19#H2325386707>. Updated 1 Apr 2020; accessed 08 Apr 2020
43. Loeffelholz MJ, Tang YW (2020) Laboratory diagnosis of emerging human coronavirus infections – the state of the art. *Emerg Microbes Infect* 9(1):747–756. <https://doi.org/10.1080/22221751.2020.1745095>
44. World Health Organization (2020) Mental health and psychosocial considerations during COVID-19 outbreak: document number: WHO/2019-nCoV/MentalHealth/2020.1. Available from <https://www.who.int/docs/default-source/coronaviruse/mental-health-considerations.pdf>. Accessed 23 Mar 2020
45. Gupta R, Ghosh A, Singh AK, Misra A (2020) Clinical considerations for patients with diabetes in times of COVID-19 epidemic. *Diabetes Metab Syndr* 14(3):211–212. <https://doi.org/10.1016/j.dsx.2020.03.002>
46. Maahs DM, DeSalvo D, Pyle L et al (2015) Effect of acetaminophen on CGM glucose in an outpatient setting. *Diabetes Care* 38(10):e158–e159. <https://doi.org/10.2337/dc15-1096>
47. Matthews R (2020) Glucose control key with COVID-19 in diabetes, say experts. *Medscape*. Available from <https://www.medscape.com/viewarticle/927044>. Accessed 18 Mar 2020

48. Day M (2020) Covid-19: ibuprofen should not be used for managing symptoms, say doctors and scientists. *BMJ* 368:m1086. <https://doi.org/10.1136/bmj.m1086>
49. Wang A, Zhao W, Xu Z, Gu J (2020) Timely blood glucose management for the outbreak of 2019 novel coronavirus disease (COVID-19) is urgently needed. *Diabetes Res Clin Pract* 162:108118. <https://doi.org/10.1016/j.diabres.2020.108118>
50. Diabetes UK (2020) Updates: Coronavirus and diabetes. Available from: https://www.diabetes.org.uk/about_us/news/coronavirus. Accessed 8 Apr 2020
51. DeFronzo R, Fleming GA, Chen K, Bicsak TA (2016) Metformin-associated lactic acidosis: current perspectives on causes and risk. *Metabolism* 65(2):20–29. <https://doi.org/10.1016/j.metabol.2015.10.014>
52. Meyer EJ, Gabb G, Jesudason D (2018) SGLT2 inhibitor-associated euglycemic diabetic ketoacidosis: a South Australian clinical case series and Australian spontaneous adverse event notifications. *Diabetes Care* 41(4):e47–e49. <https://doi.org/10.2337/dc17-1721>
53. Wilding J, Fernando K, Milne N et al (2018) SGLT2 inhibitors in type 2 diabetes management: key evidence and implications for clinical practice. *Diabetes Ther* 9(5):1757–1773. <https://doi.org/10.1007/s13300-018-0471-8>
54. Deane AM, Horowitz M (2014) Comment. Is incretin-based therapy ready for the care of hospitalized patients with type 2 diabetes? *Diabetes Care* 37(2):e40–e41. <https://doi.org/10.2337/dc13-1616>
55. Gomez-Peralta F, Abreu C, Gomez-Rodriguez S, Barranco RJ, Umpierrez GE (2018) Safety and efficacy of DPP4 inhibitor and basal insulin in type 2 diabetes: an updated review and challenging clinical scenarios. *Diabetes Ther* 9(5):1775–1789. <https://doi.org/10.1007/s13300-018-0488-z>
56. Inzucchi SE, Bergenstal RM, Buse JB et al (2012) Management of hyperglycemia in type 2 diabetes: a patient-centered approach: position statement of the American Diabetes Association (ADA) and the European Association for the Study of Diabetes (EASD). *Diabetologia* 55(6):1577–1596. <https://doi.org/10.1007/s00125-012-2534-0>
57. Mendez CE, Umpierrez GE (2015) Pharmacotherapy for hyperglycemia in noncritically ill hospitalized patients. *Diabetes Spectr* 27(3):180–188
58. American Diabetes Association (2019) 15. Diabetes Care in the Hospital: standards of medical care in diabetes–2019. *Diabetes Care* 42(Suppl 1):S173–S181. <https://doi.org/10.2337/dc19-S015>
59. Finfer S, Chittock DR, Su SY et al (2009) Intensive versus conventional glucose control in critically ill patients. *N Engl J Med* 360(13):1283–1297. <https://doi.org/10.1056/NEJMoa0810625>
60. Moghissi ES, Korytkowski MT, DiNardo M et al (2009) American Association of Clinical Endocrinologists and American Diabetes Association consensus statement on inpatient glycemic control. *Endocr Pract* 15(4):353–369. <https://doi.org/10.4158/EP09102.RA>
61. Patel AB, Verma A (2020) COVID-19 and angiotensin-converting enzyme inhibitors and angiotensin receptor blockers: what is the evidence? *JAMA*. <https://doi.org/10.1001/jama.2020.4812>
62. Driggin E, Madhavan MV, Bikdeli B et al (2020) Cardiovascular considerations for patients, health care workers, and health systems during the coronavirus disease 2019 (COVID-19) pandemic. *J Am Coll Cardiol*. <https://doi.org/10.1016/j.jacc.2020.03.031>
63. Li Y, Wang M, Zhou Y et al (2020) Acute cerebrovascular disease following COVID-19: a single center, retrospective, observational study. *SSRN*. <https://doi.org/10.2139/ssrn.3550025>
64. Bangash MN, Patel J, Parekh D (2020) COVID-19 and the liver: little cause for concern. *Lancet Gastroenterol Hepatol*. [https://doi.org/10.1016/S2468-1253\(20\)30084-4](https://doi.org/10.1016/S2468-1253(20)30084-4)
65. Touret F, de Lamballerie X (2020) Of chloroquine and COVID-19. *Antivir Res* 5(177):104762
66. Yao X, Ye F, Zhang M et al (2020) In vitro antiviral activity and projection of optimized dosing design of hydroxychloroquine for the treatment of severe acute respiratory syndrome coronavirus 2 (SARS-CoV-2). *Clin Infect Dis* ciaa237. doi: <https://doi.org/10.1093/cid/ciaa237>
67. Zhou D, Dai SM, Tong Q (2020) COVID-19: a recommendation to examine the effect of hydroxychloroquine in preventing infection and progression. *J Antimicrob Chemother* dkaa114. doi: <https://doi.org/10.1093/jac/dkaa114>
68. Gautret P, Lagier JC, Parola P et al (2020) Hydroxychloroquine and azithromycin as a treatment of COVID-19: results of an open-label non-randomized clinical trial. *Int J Antimicrob Agents* 105949. doi: <https://doi.org/10.1016/j.ijantimicag.2020.105949>
69. Cortegiani A, Ingoglia G, Ippolito M, Giarratano A, Einav S (2020) A systematic review on the efficacy and safety of chloroquine for the treatment of COVID-19. *J Crit Care* S0883-9441(20):30390–30397. <https://doi.org/10.1016/j.jcrc.2020.03.005>
70. Gao J, Tian Z, Yang X (2020) Breakthrough: chloroquine phosphate has shown apparent efficacy in treatment of COVID-19 associated pneumonia in clinical studies. *Biosci Trends* 14(1):72–73. <https://doi.org/10.5582/bst.2020.01047>
71. Cansu DU, Korkmaz C (2008) Hypoglycaemia induced by hydroxychloroquine in a non-diabetic patient treated for RA. *Rheumatology (Oxford)* 47(3):378–379. <https://doi.org/10.1093/rheumatology/kem378>
72. Anesi GL (2020) Coronavirus disease 2019 (COVID-19): critical care issues. *UpToDate*. Available from: <https://www.uptodate.com/contents/coronavirus-disease-2019-covid-19-critical-care-issues>. Updated 8 Apr 2020; accessed 10 Apr 2020
73. FDA (2020) Remdesivir: EUA letter of authorisation. Published 1 May 2020. Available from <https://www.fda.gov/media/137564/download>. Accessed 2 May 2020
74. Yu LL, Zhu M, Huang Y et al (2018) Metformin relieves acute respiratory distress syndrome by reducing miR-138 expression. *Eur Rev Med Pharmacol Sci* 22(16):5355–5363
75. Zumla A, Hui DS, Azhar EI, Memish ZA, Maeurer M (2020) Reducing mortality from 2019-nCoV: host-directed therapies should be an option. *Lancet* 395(10224):e35–e36. [https://doi.org/10.1016/S0140-6736\(20\)30305-6](https://doi.org/10.1016/S0140-6736(20)30305-6)
76. Raj VS, Mou H, Smits SL et al (2013) Dipeptidyl peptidase 4 is a functional receptor for the emerging human coronavirus-EMC. *Nature* 495(7440):251–256. <https://doi.org/10.1038/nature12005>
77. Kulcsar KA, Coleman CM, Beck SE, Frieman MB (2019) Comorbid diabetes results in immune dysregulation and enhanced disease severity following MERS-CoV infection. *JCI Insight* 4(20):e131774. <https://doi.org/10.1172/jci.insight.131774>
78. Iacobellis G (2020) COVID-19 and diabetes: can DPP4 inhibition play a role? *Diabetes Res Clin Pract* 162:108125. <https://doi.org/10.1016/j.diabres.2020.108125>
79. Feng Y, Wang L, Ma X et al (2020) Effect of hCMSCs and liraglutide combination in ALI through cAMP/PKA/β-catenin signaling pathway. *Stem Cell Res Ther* 11(1):2. <https://doi.org/10.1186/s13287-019-1492-6>
80. Wang M, Cao R, Zhang L et al (2020) Remdesivir and chloroquine effectively inhibit the recently emerged novel coronavirus (2019-nCoV) in vitro. *Cell Res* 30(3):269–271. <https://doi.org/10.1038/s41422-020-0282-0>
81. Chang R, Zun W (2020) Repositioning chloroquine as an ideal antiviral prophylaxis against COVID-19 – time is now. *Preprints*. <https://doi.org/10.20944/preprints202003.0279.v1>

Publisher's note Springer Nature remains neutral with regard to jurisdictional claims in published maps and institutional affiliations.